



ARAB STEEL Co.
— Constructions —

COMPANY PROFILE





**WE ADD VALUE BY CREATING
IDEAL OUTCOMES FOR BOTH
PROPERTY OWNERS AND
TENANTS, WHERE THEY LOVE
THE TRANSFORMATION OF THEIR
PROPERTY AND MAXIMIZE THE
FINANCIAL ACHIEVED**



TABLE OF CONTENT

| | |
|-----------|----------------------------------|
| 04 | ABOUT US |
| 08 | VOICE OF CHAIRMAN |
| 10 | MANAGEMENT METHODS |
| 12 | CONSTRUCTION DELIVERY METHODS |
| 14 | CERTIFICATES |



| | |
|-----------|--------------------------|
| 16 | RESOURCES |
| 19 | MANPOWER |
| 20 | MACHINERY & EQUIPMENT |
| 22 | SCOPE OF WORKS |
| 24 | EXPERIENCE |
| 38 | CONTACT US |



ABOUT US

- **Arab Steel Co.** is holding Company founded based on integration of two authentic companies represented in Egyptian Construction Market since 1989 leading major construction projects & steel buildings manufacturing industry through Expert projects managers, Engineers & qualified staff through “Team Approach” project delivery.

Adding value to this integration and invading the market of specialized construction works with most advanced technology global wise, Arab Steel Co. added to its group of companies the advanced technology of American Engineering solution (Ligchine™ Machine innovative laser-guided and 3D GPS/LPS-guided concrete screeds).

VISION

- Be a premier engineering, construction, and project management organization by achieving extraordinary results for our customers, building satisfying careers for our people, and earning a fair return on the value we deliver.

VALUES

- **Ethics.** We are uncompromising in our integrity, honesty, and fairness.
- **Safety & Health.** We are relentless in keeping people safe from harm, and we provide a healthy work environment.
- **Quality.** We are passionate about excellence and doing our work right the first time. Our reputation depends on our delivered value in the eyes of every customer and community.
- **People.** We inspire each other with important work full of purpose, challenging development opportunities, and rewarding careers. We aspire to be the employer of choice in our industry.
- **Culture.** We actively build a diverse, inclusive, and collaborative work environment where all views are welcomed, openness is encouraged, and teamwork and merit are cornerstones. We are proud of what we do and how we do it—and we enjoy doing it!

- **Relationships.** We build positive, long-term relationships with our customers, joint-venture partners, subcontractors, suppliers, and colleagues that are built on trust, respect, and collaboration.
- **Innovation.** We develop and apply world-class technology. We listen, learn, and seek out the best ideas. We attack complacency and continually improve.
- **Sustainability.** We improve the quality of life in communities where we work by respecting local cultures, engaging local people, and protecting the environment.

COVENANTS

■ Wherever we go and whatever we do, we:

- **Demonstrate Integrity.** Exercise the highest level of professional and ethical behavior.
- **Are Respectful.** Treat people with respect and dignity. Listen actively. Communicate in a timely and forthright manner. Never undermine colleagues.
- **Collaborate.** Ask for and welcome help; offer and give it freely. Mutually resolve ambiguity and conflict.
- **Build Trust.** Make commitments responsibly and always keep our word. Be candid while building shared understanding.
- **Deliver.** Set high aspirations, plan responsibly, and honor all commitments.
- **Learn It, Do It, Share It.** Be curious. Seek, share, and build upon experiences and lessons learned.
- **Live Our Culture.** Embrace, embody, and actively contribute to our Vision, Values & Covenants. Nurture a proud legacy.

SERVICES

WE HELP YOU TO
**FINDOUT RIGHT
 SOLUTION.** ””

- **Arab Steel Co.** Offers integrated Mechanical, Electrical, Plumbing and systems support services throughout each phase of a project's life. Support of planning and programming, equipment procurement, Preconstruction, design assistance, construction operations, startup and testing commissioning and ongoing operations and maintenance are services provided by our experienced staff.



VOICE OF CHAIRMAN

Since our founding in Arab Steel, we own a stable credential in providing quality and timely services to all our clients. This enabled us to grow rapidly and become one of the key player in the contracting and construction industry in Egypt. I strongly believe in our vision and strategy to expand further; by fully utilizing our areas of expertise while exploring new opportunities and challenges with in the Middle East Market.

Our industry best practices enabled us to maintain excellence in all what we do; and this is one of the important facts that we have been a preferred choice in construction sector among the renowned clients in the market. Our industry best practices and our people are the integral parts of all our achievements; we strongly believe in our people, their expertise, commitment and dedication to strive towards attaining superior quality and standards in each and every tasks that they deliver to our clients.

Thanks to everyone for your continued support for our success, and together we will grow to further heights....

“MAY WE ALL CONTINUE
TO GROW TOGETHER
**FROM SUCCESS TO
SUCCESS!**”



MANAGEMENT METHODS:

SAFETY

WE BELIEVE THAT EVERY INCIDENT IS PREVENTABLE

Every one of our colleagues—as well as our partners and subcontractors—has stop-work authority. If it's not safe, we don't do it. We reinforce this philosophy through a combination of technical field procedures, ongoing training, and a Life Critical Requirements Program that highlights activities that could be life-threatening when not executed according to published procedures.

PUBLIC SAFETY

Public safety is a critical part of our environmental, safety, and health programs, and we work with all appropriate stakeholders to improve industry and national standards. On many projects, we prepare and implement traffic safety management plans specific to the work site and to the local roads over which equipment and materials flow to support construction.

The result is exceptional safety performance, even in hazardous work environments, severe weather, and remote locations.

QUALITY IS NEVER AN ACCIDENT.
QUALITY IS THE RESULT OF INTELLIGENT EFFORT.
- JOHN RUSKIN

POST CONSTRUCTION SERVICES

Post Construction support is an important service for our clients. Our approach of identifying and correcting warranty issues gives our clients the peace of mind that Arab Steel will be there to resolve post construction issues in a timely manner.

QUALITY

QUALITY IS DOING THE RIGHT WORK THE FIRST TIME ”

Quality work reduces cost, improves schedule, and, in doing so, satisfies our customers. We believe in achieving quality by making solid decisions based on facts, identifying issues before they occur, promptly fixing problems should they materialize, and inspiring every person on a project to “do it right the first time.”

CONSTRUCTION DELIVERY METHODS

GENERAL CONSTRUCTION

Owners look to their contractor to deliver their project at the best price, regardless of the delivery process used. Arab Steel Contracting is successful in the hard bid market. Our competitive track record demonstrates our knowledge of current market conditions and our ability to get the best possible pricing.

CM **AT-RISK**

A majority of our work is performed using a Construction Management At-Risk approach. Working as a team in a Construction Management approach provides our clients with the knowledge to support the design phase and improves the purchasing and construction phases. Arab Steel Contracting can add value to your project and reduce your schedule.



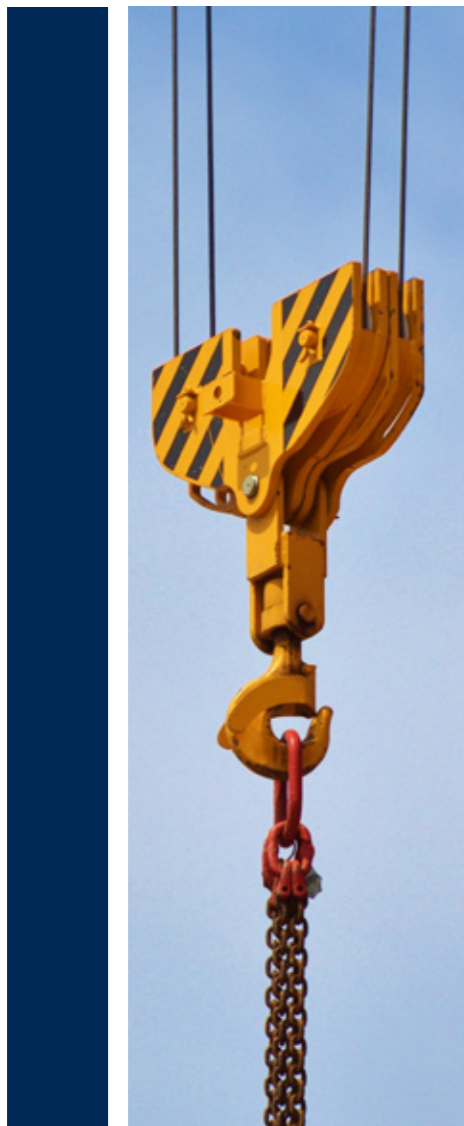
COMMITTED TO **YOUR SUCCESS**

At Arab Steel, our most valuable resource is our human resources, who carry forth our traditions, values, and long-standing reputation for performance. We take pride in investing the time and energy to recruit the best talent in our industry. We recognize that our company's success is based on the success of our associates.

We feel that values are equally as important as experience and education. When we find the right individual, we have the environment, tools, and training to set them up for success.

RESOURCES:

ORGANIZATION STRUCTURE



Directors:

- General Manager
- Executive Director

Head Office Managers:

- Cost Control Manager
- Technical Manager
- Head of Procurement Dept.
- Business Development Manager
- Financial Manager
- HR & Admin Manager

Projects Managers Engineer's And Staff Site Key Personnel



SUB CONTRACTORS & SUPPLIERS

- TWINTEC Co. (Flooring works SOG)
- Al-Zamil Steel Co.
- Kirby Steel Co.
- Alex Panel Co.
- Alex Form Co.
- Green Infra
- Ligchine™ (USA)
- Link Misr for racks installation
- Techno Misr for lockers installation
- Etc.

CONSULTANTS:

Steel Works:

- Dr Ahmed khalifa
- Dr Waleed AbdelGhaffar

Electro Mechanics:

- Dr Roby Al-Hansi

Concrete:

- Dr Ali Barakat
- Dr Shrif Hafez

Architecture Consultant:

- Abou Al-Fadel Architecture office
- Al-Hadi Al Taibi Architecture office

Architecture & Design consultants:

- Meem integrated
- Meem graphics

MANPOWER & TECHNICAL STAFF EXPERIENCE

2 HEAD MANAGERS

4 PROJECTS MANAGERS

| | |
|------------|------------------|
| 30 | ENGINEERS |
| 15 | TECHNICIAN |
| 60 | SUPERVISOR |
| 230 | LABORS |
| 400 | CARPENTER |
| 280 | IRONSMITH |
| 6 | STOREKEEPER |
| 25 | DRIVERS |
| 8 | MAINTENANCE CREW |
| 80 | UPLIFT CREW |
| 8 | ACCOUNTANT |



MACHINERY & EQUIPMENT



■ Ligchine American international

Worth: 420,000 \$

- Super leveled floors
- Screen saver pro. (2,500 sqm per 8 hours)
- leaser mezzanine
- Trimble
- Helicopter ride on
- Ekin CSS



■ Batch Plant

Worth: 1,600,000 \$

- High quality floor
- Tolerance 1-2 ml
- mecca patch 3 sqm
- 3 trans mixer cars
- Concrete pump schwing 45
- Generators 0.5 KVA
- Concrete Lab
- Mobile crain
- 50 tons
- Demag Germany

■ Caterpillar

1- loader 980 – worth 130,000\$

2- loader 925 – worth 1,500,000 \$

■ Crusher plant

worth: 3,900,000 \$

■ Steel Fabrication Factory

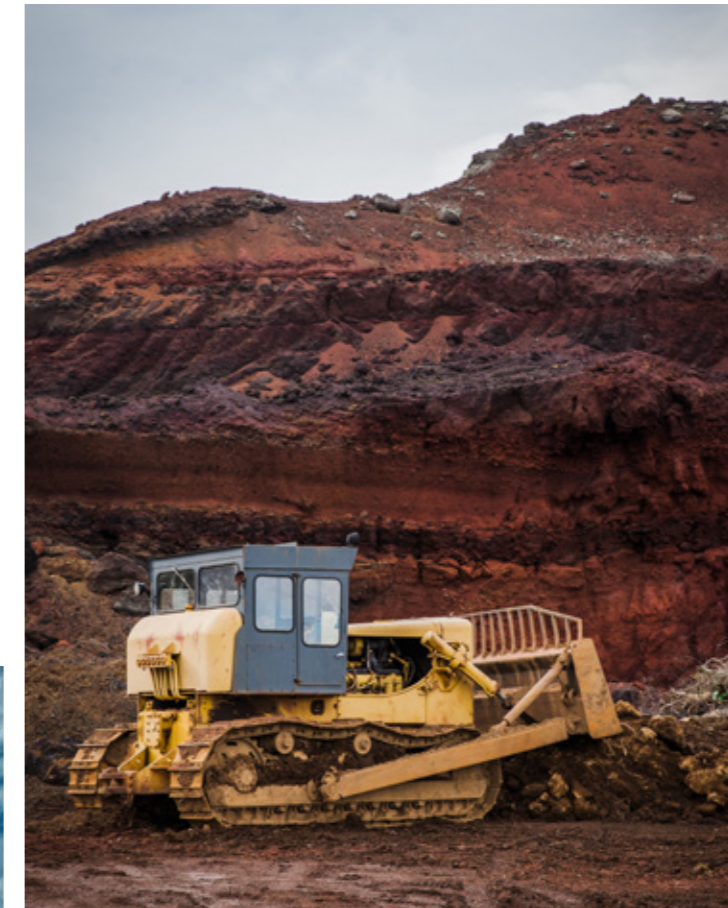
worth: 385,000 \$

- steel works



SCOPE OF WORKS (INCLUDING BUT NOT LIMITED TO):

- Civil Works
 - SOG
 - Steel Works & Cladding
 - Finishing Works
 - Dock Levelers
 - MEP Works
- Addition to Project Management

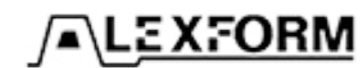


EXPERIENCE:

LIST OF MAJOR CLIENTS



TOPSHOP





OUR LATEST MILESTONE

1- JADE COMPANY ISMAILIA

■ EXECUTED WORK

- Civil works
- Steel works (Steel structure, Cladding sandwich panels)
- Slab on grade (SOG), (Super level floor)
- Infra structure works
- Plumbing
- Water treatment station
- Finishing
- Mezzanine
- Landscape
- Football field



Budget

**19\$
Million**



Area

**125,000
sqm**



Time Frame

**2018-
2019**



■ EXECUTED WORKS

Production buildings 60,000 sqm

Production buildings sections:

- Weaving + warehouse
- Dyeing + warehouse
- Segmentation + warehouse
- Tailor + warehouse

Administrative building 2,000 sqm

- 3 Floors with suite

Lockers and kindergarten building

Water treatment Plant:

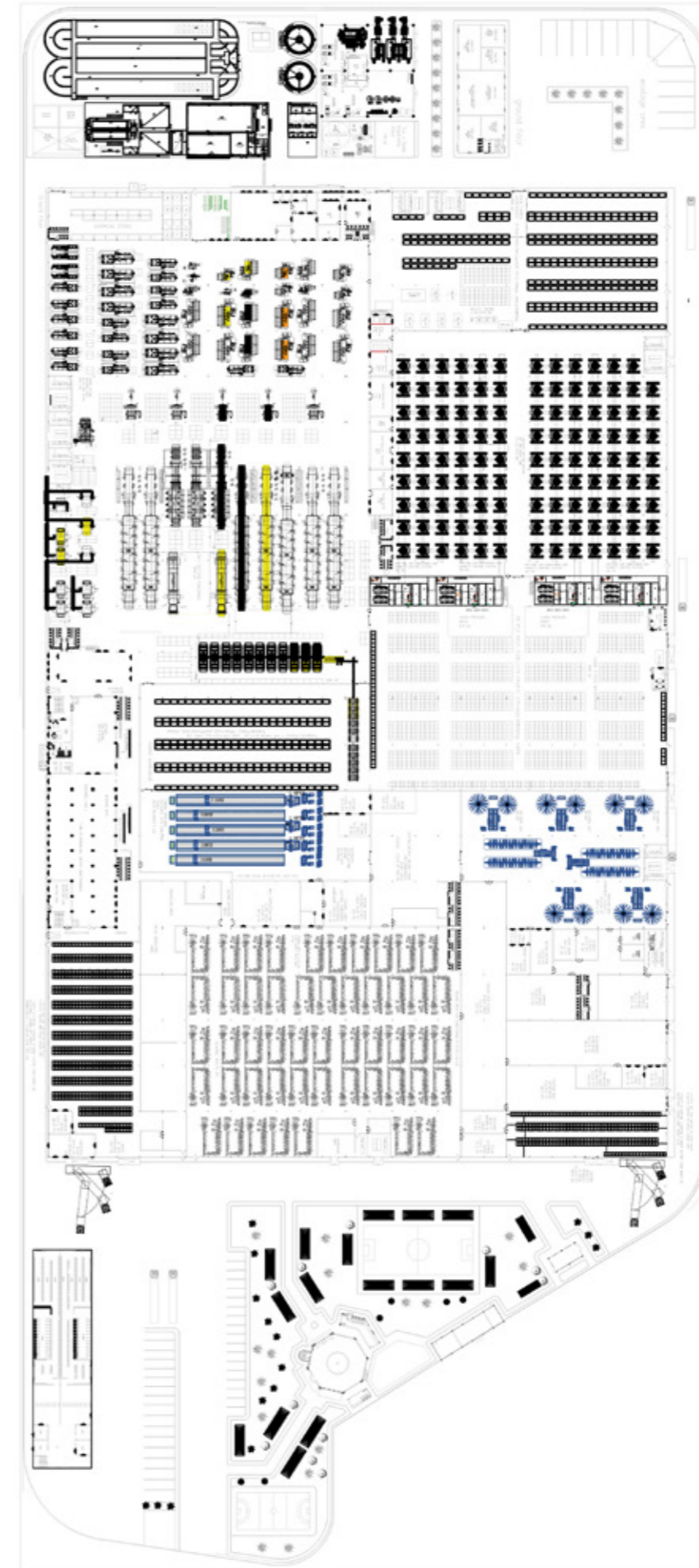
- Sanitation

Steel structure building

Water tank

Power building

Warehouses 30,000 sqm



■ REAL SITE PHOTOS





2004

Meivo

Executed work:

- Administrative building 3,000 sqm (4 Floors)
- Production building 2,000 sqm (2 Floors)
- Medicines warehouse 2,000 sqm (including winch VNA)

Area: 7,000 sqm
Budget: 10,000,000 \$



2008

Al Fath

Executed work:

- Administrative building 2,000 sqm
- Steel structure production building 3,000 sqm
- Medicines warehouse (5,000 sqm – High 15 m – Included winch VNA)

Area: 10,000 sqm
Budget: 12,000,000 \$



2014

Ultimate Pharma

Executed work

- Administrative building
- Production building (3 floors)
- Steel structure warehouse

Area: 5,000 sqm
Budget: 5,000,000 \$

MAJOR PROJECTS EXECUTED



2006

Medizen

Executed work:

- Concrete building 4,000 sqm (Basement + Ground + First +2nd floors)

Area: 10,000 sqm
Budget: 6,000,000 \$



2009

Mediterranean Tissue Mill

Executed work:

- Steel structure production lines warehouse
- Raw materials warehouse
- Final product warehouse
- Production building

Area: 25,000 sqm
Budget: 4,200,000 \$

PART OF OUR **SUCCESS STORY**

| PROJECT NAME | EXECUTED WORK | AREA | BUDGET | YEAR |
|----------------------------------------------------------------|---------------------------------------------------------------------------------------------------------------------------------------------------------------------------------------------------------------------------------------------------------------------|------------|--------------|------|
| Pyramids Glass | <ul style="list-style-type: none"> - Warehouse 1,000 sqm - Administrative building + warehouse (5,000 sqm) - Storm waterpipe line network - Fire fighting - Utilities network | 24,000 sqm | 600,000 \$ | 2009 |
| Mediterranean <i>Pakistani investor</i> | <ul style="list-style-type: none"> - Warehouse 5,000 sqm - Boundary walls 3 km - Electrical powerplant 500 sqm | 60,000 sqm | 1,200,000 \$ | 2006 |
| Diamond for Plastic <i>Pakistani investor</i> | <ul style="list-style-type: none"> - Steel structure warehouse 3,000 sqm - Administrative building 500 sqm (2 Floors) - Yard | 15,000 sqm | 500,000 \$ | 2004 |
| Jade (under the license of Nike) <i>Turkish investor</i> | <ul style="list-style-type: none"> - Steel structure production line - Administrative building (3 Floors) | 9,000 sqm | 1,800,000 \$ | 2014 |
| Top Shop <i>UK investor</i> | <ul style="list-style-type: none"> - Steel structure production line 5,000 sqm - Steel structure warehouse for garments 1,500 sqm | 7,000 sqm | 1,800,000 \$ | 2008 |
| Imami Group <i>Indian investor</i> | <ul style="list-style-type: none"> - Steel structure production line 3,000 sqm - Administrative building 5,000 sqm (2 floors) - Warehouse 600 sqm - Production building (3 floors) 700 sqm - Warehouse 1,000 sqm | 7,000 sqm | 1,250,000 \$ | 2015 |
| Auto Company | <ul style="list-style-type: none"> - Steel structure building (3 floors) 2,000 sqm | 2,000 sqm | 2,000,000 \$ | 2005 |
| Italian Egyptian Company | <ul style="list-style-type: none"> - Steel structure production line 3,000 sqm - warehouse | 5,000 sqm | 850,000 \$ | 2005 |
| Al Ekhlis For Plastic | <ul style="list-style-type: none"> - steel structure building - boundary walls | 5,000 sqm | 1,000,000 \$ | 2002 |

| PROJECT NAME | EXECUTED WORK | AREA | BUDGET | YEAR |
|----------------------------------|-----------------------------------------------------------------------------------------------------------------------------------------------------------------------------------------------------------------|-----------------------------|--------------|------|
| Metco | <ul style="list-style-type: none"> - Production building 1,000 sqm - Steel structure warehouse 2,000 sqm - Steel structure warehouse 1,000 sqm - Boundary wall 1.5 Km | 7,000 sqm | 1,000,000 \$ | 2006 |
| Bait food | <ul style="list-style-type: none"> - Production building 3,000 sqm - Warehouses 4,000 sqm - Administrative building - Boundary walls | 7,000 sqm | 2,000,000 \$ | 2007 |
| Space frame (for parking) | <ul style="list-style-type: none"> - Production building 3,000 sqm - Warehouses 4,000 sqm - Administrative building - Boundary walls | 4,000 sqm | 200,000 \$ | 2019 |
| Swimming Pool and stadium stands | <ul style="list-style-type: none"> - Production building 3,000 sqm - Warehouses 4,000 sqm - Administrative building - Boundary walls | 1,200 sqm (17x100 Meter) | 160,000 \$ | 2019 |
| Ayko (under armor license) | <ul style="list-style-type: none"> - Steel structure warehouse - Warehouses - Civil works - Finishes | 14,000 sqm | 850,000 \$ | 2007 |



CONTACT INFORMATION

BORG ELARAB OFFICE:

13 ENGINEERS SYNDICATE PROJECT ST.,
NEW BORG ELARAB, ALEXANDRIA

MOBILE:

(+20) 111 199 9751

STEEL FACTORY:

THE THIRD INDUSTRIAL ZONE, PLOT 9,
BLOCK 9, IN FRONT OF PREFIX FACTORY,
BOURG ELARAB, ALEXANDRIA, EGYPT

MOBILE:

(+20) 112 4441412

ALEXANDRIA OFFICE:

8 ALBAQEEA ST., AL IBRAHIMIA
ALEXANDRIA, EGYPT

PHONE:

(+20) 34262684

MOBILE:

(+20) 127 334 9938 -(+20) 100 924 3181

EMAIL:

ARABSTEELEG@ARABSTEEL-EG.COM

WEB:

ARABSTEEL-EG.COM